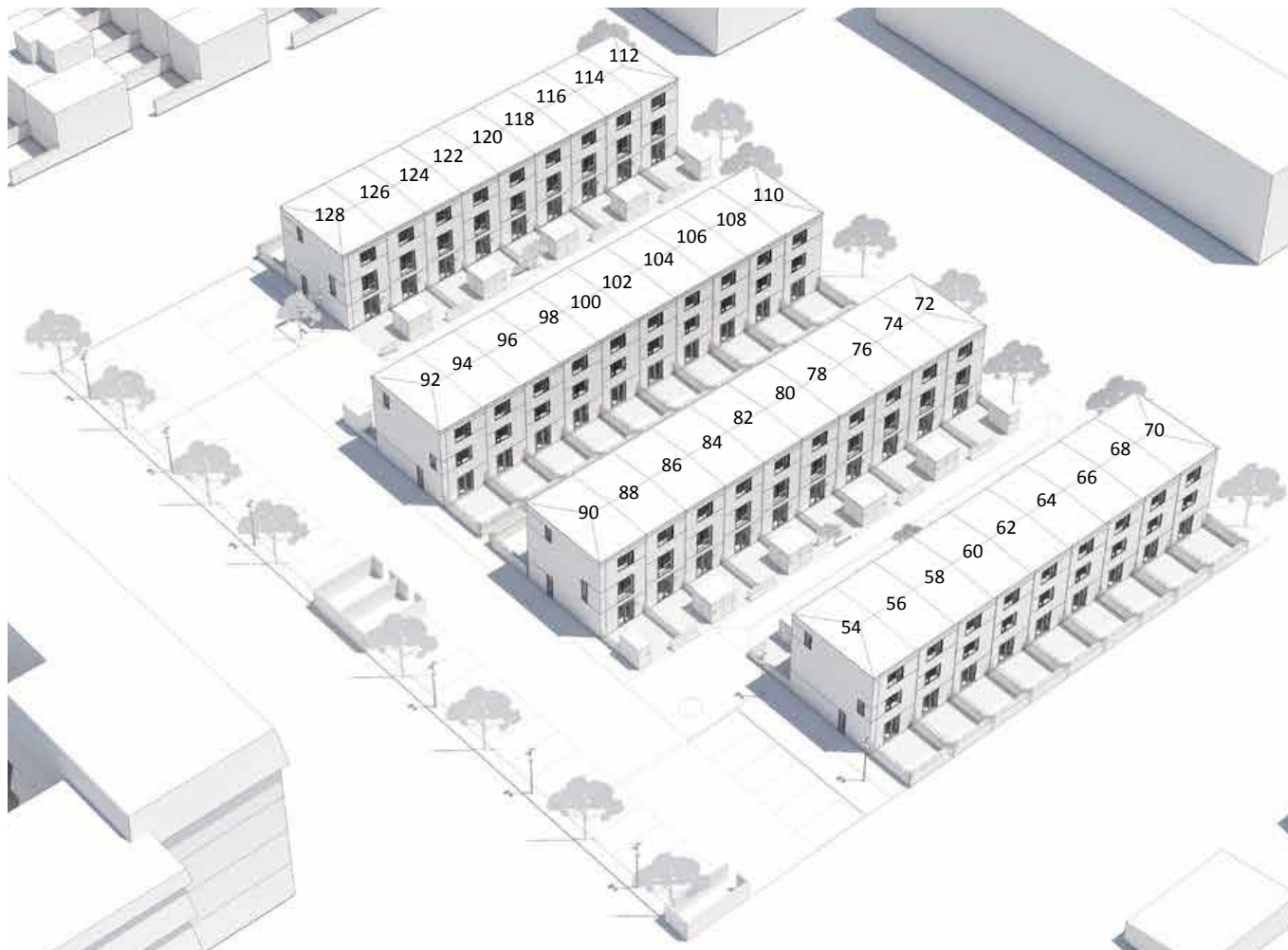




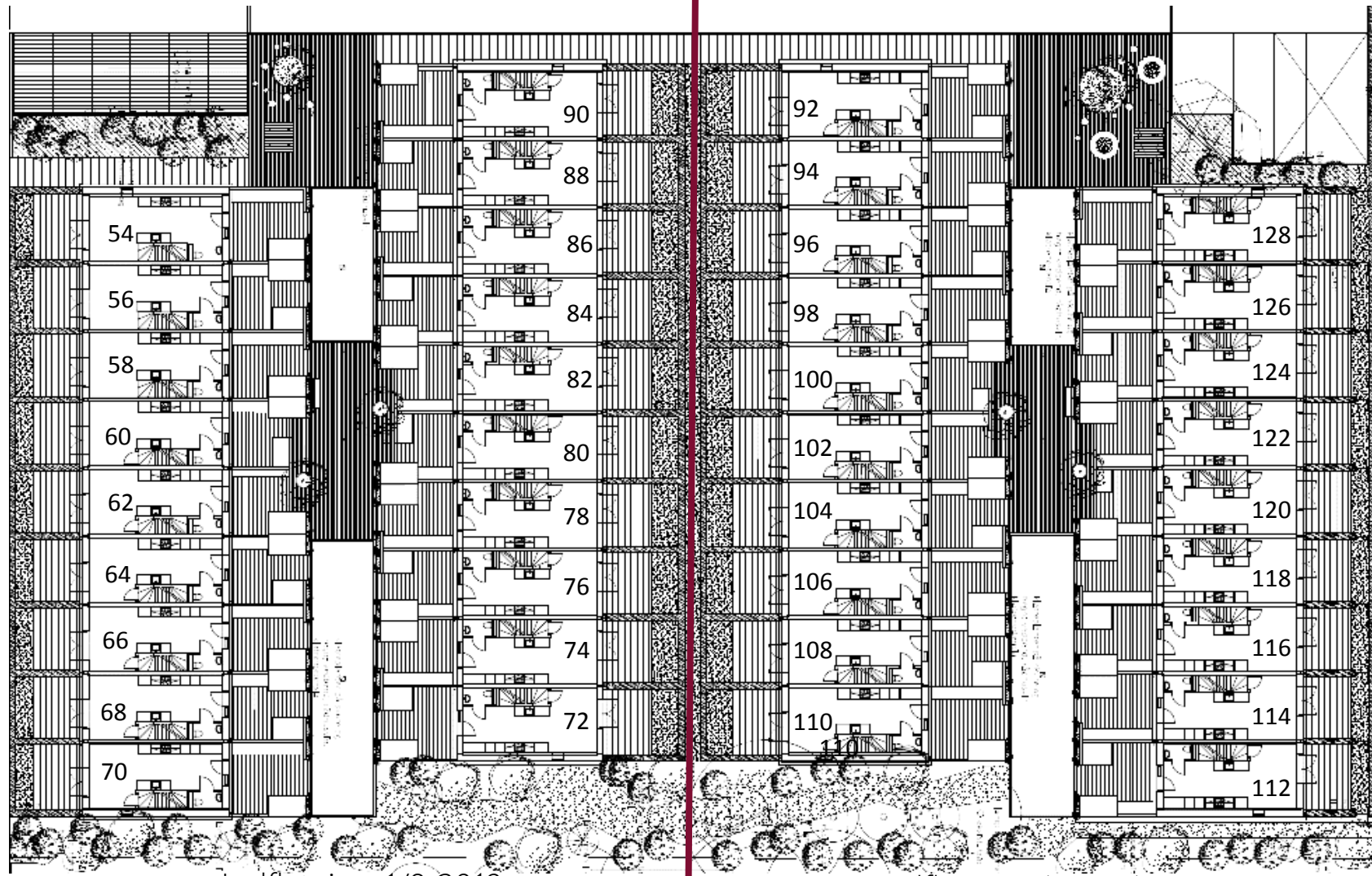
LEJEMÅLSOVERSIGT  
Gyldenrisvej 54-128, 2300 København S



 OVERSICHT OVER  
LEJEMÅL



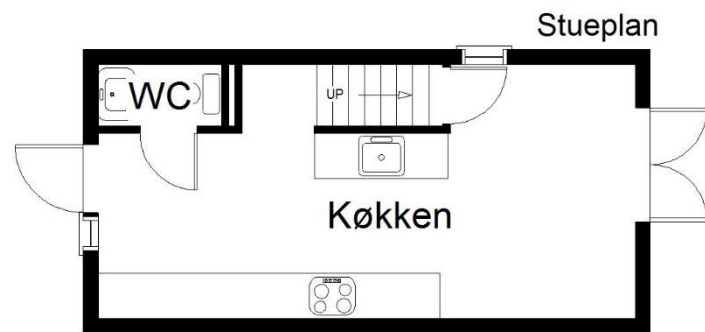
 OVERSICHT OVER  
LEJEMÅL



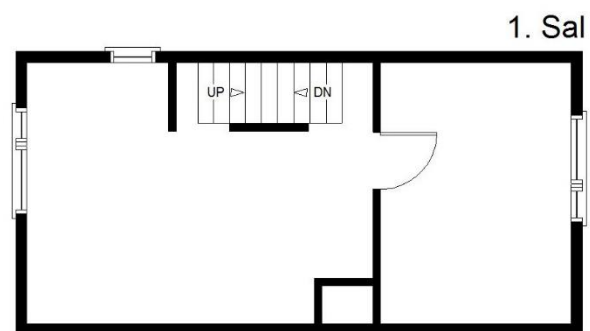
Indflytning 1/8 2019

Indflytning 1/6 2019





Vejledende og uden ansvar  
Pro-Plan





Bolig	Brutto-areal	Indflytning
92	126 m2	1/6 2019
94	114 m2	1/6 2019
96	114 m2	1/6 2019
98	114 m2	1/6 2019
100	114 m2	1/6 2019
102	114 m2	1/6 2019
104	114 m2	1/6 2019
106	114 m2	1/6 2019
108	114 m2	1/6 2019
110	126 m2	1/6 2019

Bolig	Brutto-areal	Indflytning
112	126 m2	1/6 2019
114	114 m2	1/6 2019
116	114 m2	1/6 2019
118	114 m2	1/6 2019
120	114 m2	1/6 2019
122	114 m2	1/6 2019
124	114 m2	1/6 2019
126	114 m2	1/6 2019
128	126 m2	1/6 2019





Bolig	Brutto-areal	Indflytning
54	126 m2	1/8 2019
56	114 m2	1/8 2019
58	114 m2	1/8 2019
60	114 m2	1/8 2019
62	114 m2	1/8 2019
64	114 m2	1/8 2019
66	114 m2	1/8 2019
68	114 m2	1/8 2019
70	126 m2	1/8 2019

Bolig	Brutto-areal	Indflytning
72	126 m2	1/8 2019
74	114 m2	1/8 2019
76	114 m2	1/8 2019
78	114 m2	1/8 2019
80	114 m2	1/8 2019
82	114 m2	1/8 2019
84	114 m2	1/8 2019
86	114 m2	1/8 2019
88	114 m2	1/8 2019
90	126 m2	1/8 2019

